

Product Spotlight

Multi-Ply Expansion Joints - 308/311

The Keflex 308/311 multi-ply expansion joint is the ultimate solution to piping thermal expansion problems. It offers many end configurations including 150# and 300# drilling flanges, Sch 40 and Sch 80 weld ends. Tie rods are available as options as well and for outdoor applications or applications where potential damage can occur to the bellows a shroud option (311) is available. The multi-ply construction provides long life and soft spring rate making them an easy to install reliable solution. The standard internal liner manages flow effects, reduces the temperature on the bellows and reduces the potential for abrasive action on the bellows.



308 Multi-ply
Expansion Joint

AHR Expo is Just Around the Corner



Come and see
us in booth
4077 in Dallas!

Stephanie's Recipe for Success

How To Satisfy an RFQ with only 5 Ingredients.

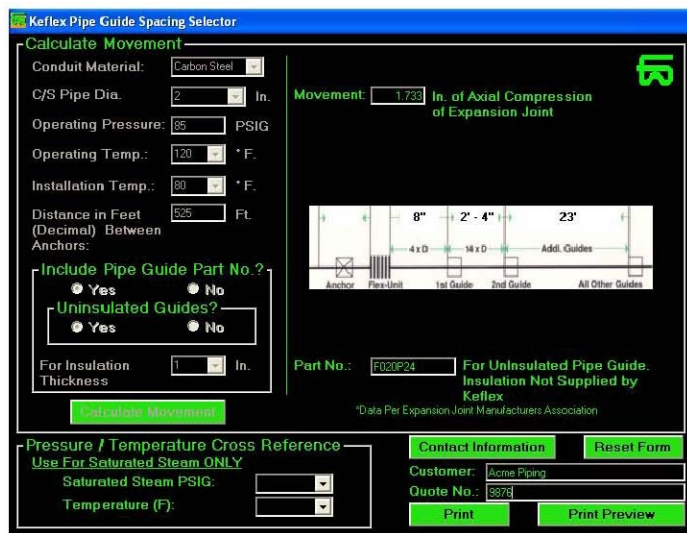
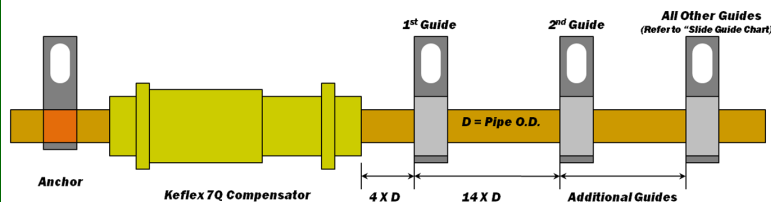
1. Size of the pipe in the application
2. Pressure Range
3. Temperature Range
4. Movement required
5. End fittings-type and material required

Put this information all together and we can create a solution for your application!

Application Spotlight

Proper Guiding and Anchoring Standards

As we move into the heating season, a question that frequently comes up is the spacing of guides and the placing of anchors in a system. Below is the baseline for placing guides between anchors in a pipe run. The basic calculation for the first guide is 4 X the diameter of the pipe. The second guide is placed at 14 X the diameter of the pipe. The balance of guides are placed based on the pressure in the system. If all of this seems to complicated, we've made calculating this out for your customers easy with our **"Pipe Guide Spacing Selector"**. All you need to do is fill in the blanks and the program does the rest for you. If you don't have a copy of this helpful program already, give us a call or send us an email and we'll get a copy right out to you.



Your KEFLEX Team

Engineering

Don Grandt—Engineering Manager
Phone: 815-334-3631
Email: dongrandt@kelcomail.com

Customer Service

Stephanie Babineau—Account Specialist
Phone: 815-334-3642
Email: Sbabineau@kelcomail.com

Product Management

Tom Rhode—Product Manager
Phone: 815-334-3620
Email: tomrhode@kelcomail.com

